

# Resources for Community Gardeners (Page 1)

VegNet, good collection of factsheets and photo gallery: <https://vegnet.osu.edu>

OSU Soil Testing Factsheet: <https://ohioline.osu.edu/factsheet/hyg-1132>

Ohioline factsheets: <https://ohioline.osu.edu/search/site/factsheets>

OSU Franklin County:

<https://www.youtube.com/channel/UCyMGIm3NaqRzDRrE3xSg1XA/playlists>

Vegetable Disease Information: <https://extension.psu.edu/identifying-diseases-of-vegetables>

All American Selections: <http://www.all-americanselections.org>

BYGL, Buckeye Yard and Garden Online: <http://bygl/osu.edu>

Cornell Vegetable MD: <http://vegetablemdonline.ppath.cornell.edu>

Cornell Vegetable Growing Guides:

<http://www.gardening.cornell.edu/homegardening/scene0391.html>

# Resources for Community Gardeners (Page 2)

Native plants: <https://www.cuyahogawcd.org/programs/native-plants>

All American Selections: <https://all-america-selections.org>

Penn State Extension, pests and diseases: <https://extension.psu.edu/forage-and-food-crops/vegetables/pests-and-diseases>

Is this plant a weed?: <http://www.extension.umn.edu/garden/diagnose/weed/>

Identify and manage common and invasive weeds:  
<http://weeds.cropsci.illinois.edu/weedid.htm>

Northern climate seed source: [www.clevelandseedbank.org](http://www.clevelandseedbank.org)

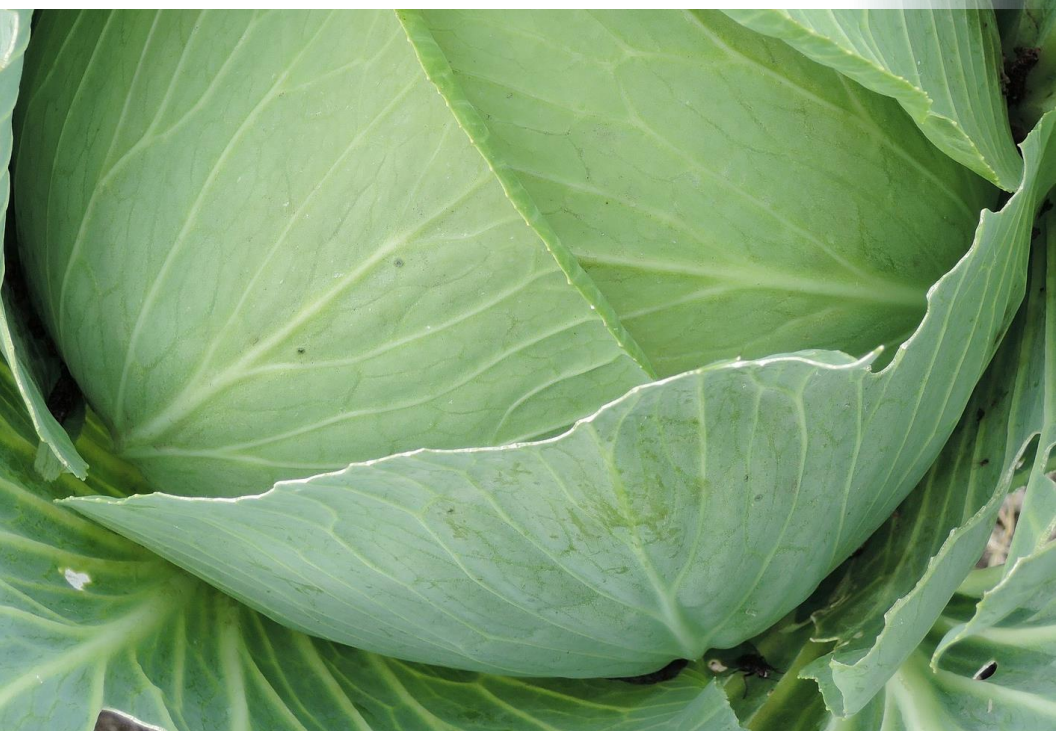
Compost local training and bins:  
<https://cuyahogarecycles.org/composting> and yard waste

Compost How-to: <http://cwmi.css.cornell.edu/composting.htm>

Gardening with children: <http://urbanext.illinois.edu/Xirstgarden/>

**MASTER GARDENERS OF CUYAHOGA COUNTY**

# VEGETABLE GARDENING CALENDAR

**MASTER GARDENER  
HOTLINE**

(216) 429-8200, PRESS 1

April through October

Call anytime and leave a message. A Master Gardener Volunteer will call you back within a day or two. Or to talk with a live Master Gardener, check our website, [cuyahogamg.org](http://cuyahogamg.org) for days and times.

Ask A Master Gardener online:

[mastergardener.osu.edu/ask](http://mastergardener.osu.edu/ask)



**THE OHIO STATE  
UNIVERSITY**

COLLEGE OF FOOD, AGRICULTURAL,  
AND ENVIRONMENTAL SCIENCES

CFAES provides research and related educational programs to clientele on a nondiscriminatory basis. For more information:  
[go.osu.edu/cfaesdiversity](http://go.osu.edu/cfaesdiversity)

JANUARY	FEBRUARY	MARCH & APRIL	MAY	
<p><b>REVIEW</b> last year's garden map and notes</p> <p><b>PLAN</b> new garden</p> <p><b>CHECK</b> saved seed</p> <p><b>PLANT SEEDS</b> under lights during 4<sup>th</sup> week: Alliums: Onions, Garlic, Leeks, Shallots</p>	<p><b>START SEEDS</b> of cold weather vegetables under lights:</p> <p>Broccoli</p> <p>Cauliflower</p> <p>Brussels Sprouts</p> <p>Cabbage</p>	<p><b>SOIL:</b> test and prepare if workable</p> <p>Prune and spray fruit trees</p> <p>Tidy up + fertilize Asparagus &amp; Rhubarb</p> <p><b>PLANT STARTS</b> of cold weather vegetables: Broccoli, Cauliflower, Brussels Sprouts, Cabbage</p> <p><b>DIRECT SEED:</b> Peas, Carrots, Chard, Parsnips, Lettuce, Beets, Celery, Early Potatoes, Spinach, Kale, Radishes</p>	<p><b>DIRECT SEED:</b> ( Before May 20<sup>th</sup>) Corn</p> <p><b>AFTER FROST DATE</b> (May 20<sup>th</sup>)</p> <p><b>PLANT STARTS:</b> Tomatoes, Peppers, Eggplants</p> <p><b>DIRECT SEED:</b> Beans, Squash, Melons, Potatoes, Cucumber</p> <p><b>HARVEST:</b> Rhubarb, Lettuce, Spinach, Scallions, Radishes, Asparagus</p>	
JUNE	JULY	AUGUST	SEPTEMBER	OCTOBER
<p>Continue seeding Corn every few weeks</p> <p><b>REPLACE</b> seeded cold weather crops that are bolting</p> <p><b>MULCH</b> (mid-month)</p> <p><b>PICK:</b> Asparagus, Lettuce, Spinach, Onions, Beets, Carrots</p> <p><b>FERTILIZE:</b> All vegetables (Mid month) Corn (2x this month)</p>	<p>Fertilize corn (2x)</p> <p><b>2<sup>ND</sup> WEEK – SEED COLD WEATHER FALL CROPS:</b> Carrots, Parsnips, Cabbage, Broccoli, Brussels Sprouts, Cauliflower</p> <p><b>HARVEST:</b> Corn, Beans, Cucumber, Summer Squash, Potatoes</p>	<p><b>SEED:</b> (Mid-Month) Lettuce, Spinach, Radishes, Turnips, Kale (for Fall)</p> <p><b>HARVEST:</b> Regularly</p> <p><b>PRESERVE:</b> Vegetables for winter Can, freeze and dry</p>	<p><b>COLLECT,</b> dry and store heirloom seeds for next year</p> <p><b>HARVEST</b> and cure winter squash and gourds</p> <p><b>CLEAN UP</b> garden and tools</p> <p><b>SET UP</b> garden season extension material</p>	<p>Watch for frost warning (average date: Oct. 15<sup>th</sup>)</p> <p><b>HARVEST:</b> Pumpkins (after 1<sup>st</sup> frost) Parsnips, Brussels Sprouts</p> <p><b>FINAL CLEAN UP</b></p> <p><b>PLANT</b> a cover crop</p>

**MASTER GARDENERS OF CUYAHOGA COUNTY**

# TIPS

## For Planting Your Vegetable Garden

**MASTER GARDENER HOTLINE**

(216) 429-8200, PRESS 1

April through October

Call anytime and leave a message. A Master Gardener Volunteer will call you back within a day or two. Or to talk with a live Master Gardener, check our website, [cuyahogamg.org](http://cuyahogamg.org) for days and times.

Ask A Master Gardener online:  
[mastergardener.osu.edu/ask](http://mastergardener.osu.edu/ask)



**THE OHIO STATE  
UNIVERSITY**

COLLEGE OF FOOD, AGRICULTURAL,  
AND ENVIRONMENTAL SCIENCES

CFAES provides research and related educational programs to clientele on a nondiscriminatory basis. For more information:  
[go.osu.edu/cfaesdiversity](http://go.osu.edu/cfaesdiversity)



# Plan Your Garden on Paper

A 10' X 10' is recommended for beginners.

Consider space needed between plants and between rows of plants (spacing will be indicated on seed package).

Crop rotation: group plants by families and change their location every year.

## Crop Rotation

**Grow crops of a specific family in different areas of the garden to avoid diseases and nutrient depletion.**

See <http://ohioline.osu.edu> for more information.

## Families of Vegetables

### **BRASSICAS or CRUCIFERS\***

Cabbage Cauliflower  
Broccoli Kale Kohlrabi  
Brussels Sprouts

### **NIGHTSHADE FAMILY\***

**(Solanaceous)**  
Tomato Pepper  
Potato Eggplant

### **PEA FAMILY (Legumes)**

All Beans and Peas

### **GOURD FAMILY (Cucurbit)**

Cucumber Squash  
Pumpkin Melons

### **PARSLEY FAMILY**

Carrot Fennel Parsley  
Celery Parsnip Celeriac

### **MUSTARD FAMILY**

Rutabaga Turnips  
Horseradish Radish  
Chinese Cabbage  
Mustard Greens

### **AMARYLLIS FAMILY**

Onion Shallot  
Leek Garlic

### **GRASS FAMILY**

Sweet Corn Popcorn

### **GOOSEFOOT FAMILY**

Beet Spinach  
Swiss Chard

### **COMPOSITE FAMILY**

Lettuce Endive Salsify  
Jerusalem Artichoke

\* Most sensitive to disease

# Have a Gardening Question?

Our Telephone Hotline is closed for the season. Look for us again in the spring.

If you need additional gardening information now, online experts can help.

Go to: <https://ask2.extension.org>

Select “Ohio” in the Find an Expert box.

In the OSUEMGV box, click on “Ask your question to this group.”

Fill in the information on the Ask a Question page, including pictures when applicable, and you will receive a timely response.

